

Designer's heart is in her work

HEART From D1

Another of her collections, the Rose Collection, boasts silver wire formed into a modern rose shape. The wire is sometimes oxidized to darken it, adding dimension.

"Jewelry is three-dimensional anyway, but I'm trying to make it even more three-dimensional," she said.

Her Pearl Collection is her best-selling collection, she said, and features fresh water pearls in different sizes and colors on silver, and at reasonable prices.

"I think (they're popular) because you can dress them up or dress them down," she said.

She also creates other silver pieces adorned with semi-precious stones, such as opals, garnets, peridot, lapis and onyx. Gold sometimes is added to pieces.

Her signature item, a grape vine tornado pendant from her original collection, features silver wire twisted into a stormy triangular shape and dotted with semi-precious stones.

A large grapevine choker from that same collection is made from a single strand of silver wire and is covered with semi-precious stones.

Grady also makes customized jewelry, including silver wedding bands for friends and engagement rings for someone looking for something nontraditional. And for the bride who wants her bridesmaids to be coordinated, but not run-of-the-mill, she also makes bridal party jewelry.

"I'm always experiment-

ing. Some of my best pieces have come from me playing around with the metals," she said.

Next, Grady will be selling her designs at the Collingswood May Fair, May 24,

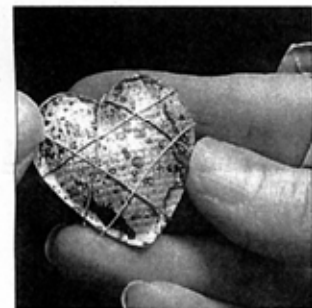
along Haddon Avenue, and at the Locally Grown Crafts Market at Whole Foods in Evesham on June 8.

For more information, visit MicheleGrady.com or call the studio at (856) 596-4566.



BCT staff photos/DENNIS MC DONALD

Jewelry designer Michele Grady cuts copper in her Evesham workshop.



Grady examines a wire-wrapped copper heart she is assembling for use in a necklace (above). The grapevine tornado necklace (right) is made of sterling silver and semiprecious stones and is Grady's signature piece.

